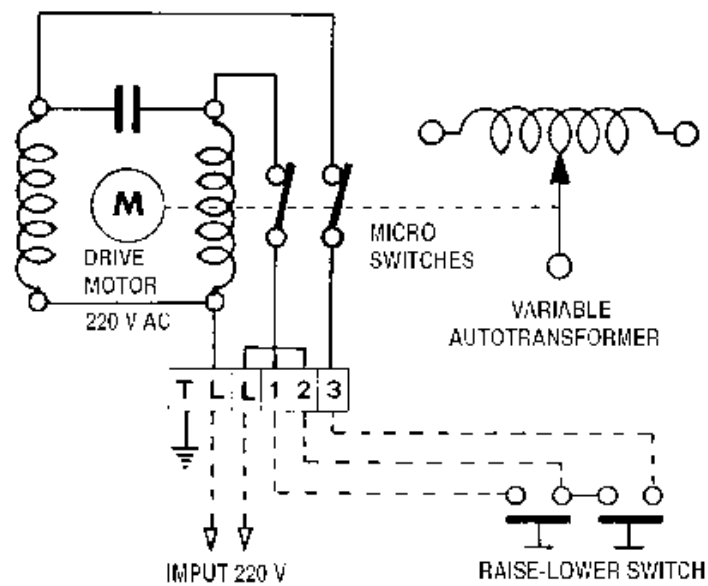




MOTORIZED VOLTAGE VARIATORS

TECHNICAL DESIGN



GENERAL FEATURES

All variable autotransformers, both single and ganged units, can be furnished with motor drive (denoted by the suffix "M").

Motor driven models permit remote control of large amounts of power. A motor driven variable autotransformer can be installed in any out-of-the-way space and the control station placed where desired; they have the same electrical ratings as their corresponding manually-operated models.

The motor-drive is a compact integral unit mounted on top of the assembly.

In the standard arrangements the voltage regulator is driven by a geared A.C. continuously-rated reversing motor 220 Volt or D.C. motor 24 V; speed (from zero to maximum output voltage) 4 sec. - 8 sec. - 16 sec. - 32 sec. - 64 sec. (Other speeds are also available on request).

Emergency hand control :

- Slipping clutches are available on all models as an optional extra.

Limit switches :

Limit micro-switches control at the lower and upper limits to prevent over-run are always fitted as standard, and are fully adjustable. Additional limit switches may be added for operation and control of auxiliary circuits.

Remote voltage program board 0-10Vdc

This option provides control voltage by an electronic board having an input signal from a PLC 0-10 Vdc and supplying an output signal (go-stop) to a gear motor of variac.

As input signal changes from zero up to 10V output voltage, i.e. voltage supplied by Variac changes from zero to maximum rated voltage.

Output voltage is directly proportional to output signal, i.e. if signal is 5 V output voltage will be just half of maximum voltage. Output voltage can be controlled also by a potentiometer (remote control).

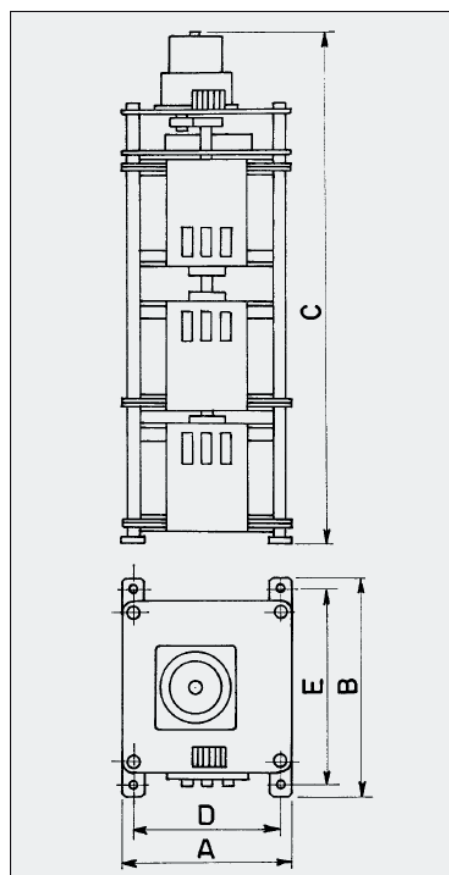
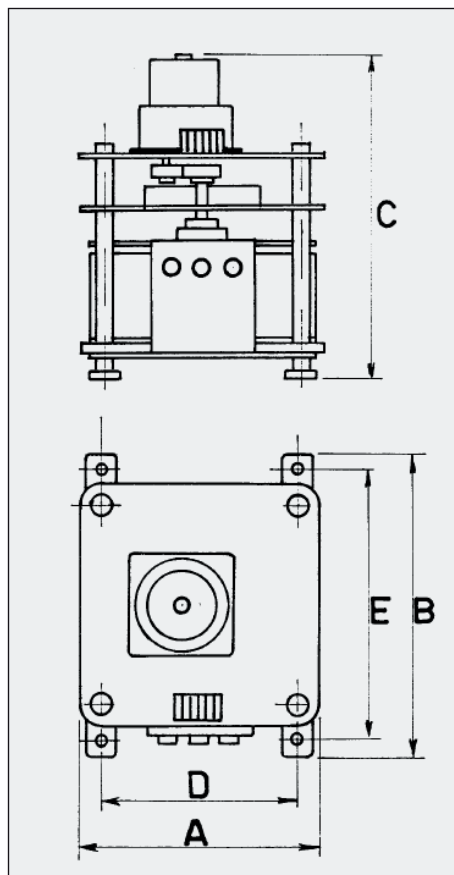
Rating and distinctive features

- Suitable for motor 24 Vdc
- Input control voltage 0-10 Vdc
- Supply voltage 220 Va.c.
- Regulation directly proportional
- Output voltage stability $\pm 1,5\%$ (Whether for load change 0-100% or supply mains change $\pm 10\%$)

Kit standard

- Electronic printed board with supply mains 220/24 Vdc Input/output terminal board
- All components secured to aluminium plate of variac

GENERAL FEATURES



TYPE V - NA - M	WEIGHT [Kg]	DIMENSIONS mm				
		A	B	C	D	E
V - 3 NA - M	5,8	160	180	260	85	160
V - 5 NA - M	7	160	180	270	100	160
V - 10 NA - M	11	160	210	300	133	186
V - 20 NA - M	17	200	250	300	158	226
V - 40 NA - M	23	230	280	300	184	256
V - 70 NA - M	40	330	380	320	273	356

TYPE T - NA/3 - M	WEIGHT [Kg]	DIMENSIONS mm				
		A	B	C	D	E
T - 3 NA/3 - M	12	160	180	500	85	160
T - 5 NA/3 - M	16	160	180	530	100	160
T - 10 NA/3 - M	27	160	210	570	133	186
T - 20 NA/3 - M	44	200	250	605	158	226
T - 40 NA/3 - M	56	230	280	620	184	256
T - 70 NA/3 - M	114	330	380	730	273	356