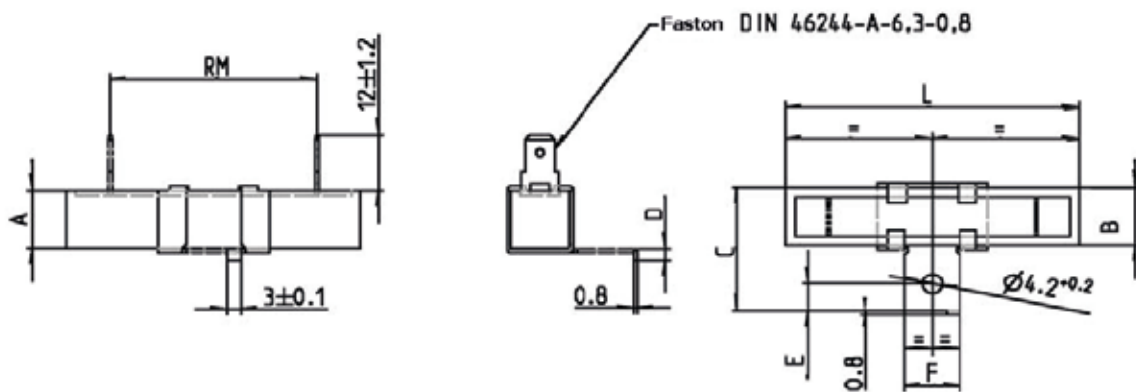




# CERAMIC CASE RESISTORS KRX-27-4H MODEL

## TECHNICAL DESIGN



### Deratingcurve

Temperature	0~70°C	> 70°C
Power	100%	see Fig. 1

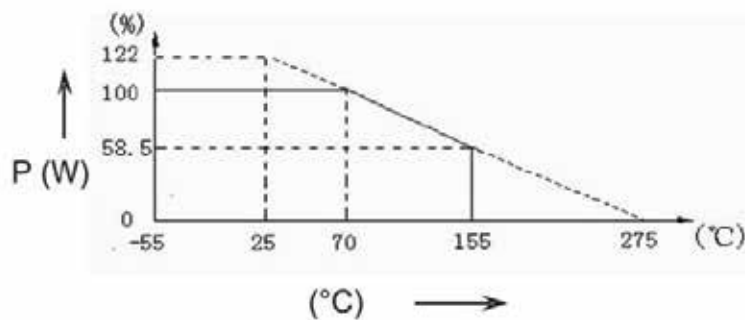


Fig. 1

## GENERAL FEATURES

The resistors of the KRX series are low-power resistor (till 20W), the main characteristics for this resistors are the compactness, the possibility to made a large range of resistance value and the small dimensions that permit to use this products on electronic printed boards. The terminal may be tinned and permit a fast insert on electric board.

Style		KRX 27-4H-20	KRX 27-4H-25	KRX 27-4H-30	KRX 27-4H-40
<b>Dimensions</b>	<b>A =</b>	12,5 ±1,2	16,0 ±1,2	19,0 ±1,5	19,0 ±1,5
	<b>B =</b>	12,5 ±1,2	16,0 ±1,2	19,0 ±1,5	19,0 ±1,5
	<b>C =</b>	27,3 ±0,5	30,8 ±0,5	37,8 ±0,5	37,8 ±0,5
	<b>D =</b>	2,3 ±0,5	3,0 ±0,5	3,0 ±0,5	3,0 ±0,5
	<b>E =</b>	5,8 ±0,2	5,8 ±0,2	7,2 ±0,2	7,2 ±0,2
	<b>F =</b>	12	12	18	18
	<b>L =</b>	63,5 ±2	63,5 ±2	75,0 ±2,5	90,0 ±2,5
	<b>RM =</b>	47,3 ±1,5	46,4 ±1,5	54 ±2	70,3 ±2
	<b>Carrier</b>	Fiber glass core			
<b>Resistance range</b>		1R0 - 10K	1R2 - 12K	1R5 - 15K	1R8 - 20K
<b>Resistance tolerances</b>	K (± 10%) J (± 5%)				
<b>Power rating P<sub>N</sub></b>		20 W	25 W	30 W	40 W
<b>Dissipation at Ta=25°C</b>	<b>Ts= 150°C</b>	8,0 W	10,0 W	12,0 W	16,0 W
	<b>Ts= 250°C</b>	13,0 W	18,4 W	20,0 W	26,0 W
	<b>Ts= 275°C</b>	20,0 W	25,0 W	30,0 W	40,0 W
<b>Dissipation at Ta=70°C</b>	<b>Ts= 150°C</b>	6,0 W	7,5 W	9,0 W	12,0 W
	<b>Ts= 250°C</b>	9,8 W	12,0 W	14,5 W	19,5 W
	<b>Ts= 275°C</b>	15,0 W	18,8 W	22,5 W	30,0 W
<b>Dielectric withstanding voltage</b>	≥ 2000 Veff				
<b>Limiting voltage</b>	RADQ (P <sub>N</sub> x R)				
<b>Temperature coefficient</b>	-80...+500 x 10 <sup>-6</sup> /K				
<b>Lim. surface temperature</b>	275 °C				
<b>Marking</b>	Cipher stamped, the marking of values according to DIN/IEC 62				